

FLAMEPROOF TERMINAL SWITCH type KST 09/2022

1. APPLICATION

Flameproof terminal switch–type KST is intended to use mainly to signal the position of the safety quick closing equipment type SČA C26 42..... in regulating stations of heating gas.

2. DESCRIPTION

The base consists of a quick-brake switch TECHNOR XCWD (a separate body without superstructure is marked ZCWD), which is equipped with an attachment superstructure. The sprung front piston of the instantaneous switch is controlled by a contact pin movable in the superstructure body, which transmits the movement of the safety quick closing equipment lever to the switch mechanism.



3. IMPLEMENTATION

The flameproof terminal switch is intended to use for hazardous area ZONE 1 and ZONE 2 acc. to EN 60079-10-1. A cable G 5x0.75 mm² in lengths of 2 m (KST 12 version), 5 m (KST 15 version) and 10 m (KST 10 version) is fixed from the switch body. The superstructure of the switch body is equipped with a pin with M 12x1.5 threaded with a locking nut to attach the safety quick closing equipment to the stop lever.

4. TECHNICAL PARAMETERS

Equipment group and category:

II 2G D

Flameproof class:

Ex db IIC T6 Gb EN 60079-0, EN 60079-1, EN 60079-31

Degree of protection:

IP 66

Rated operating characteristics:

AC15: 240V; 0,75A

DC13: 250V; 0,1 A

Short circuit protection:

6A gG

El. contacts:

quick-brake 1/1 (1 N/O + 1 N/C)

Working temperature:

- 20 to 60 °C

Mechanical life:

1 x 10⁷ operations

Feed speed for safety switching:

0,001 to 0,5 m/s

Fixed cable:

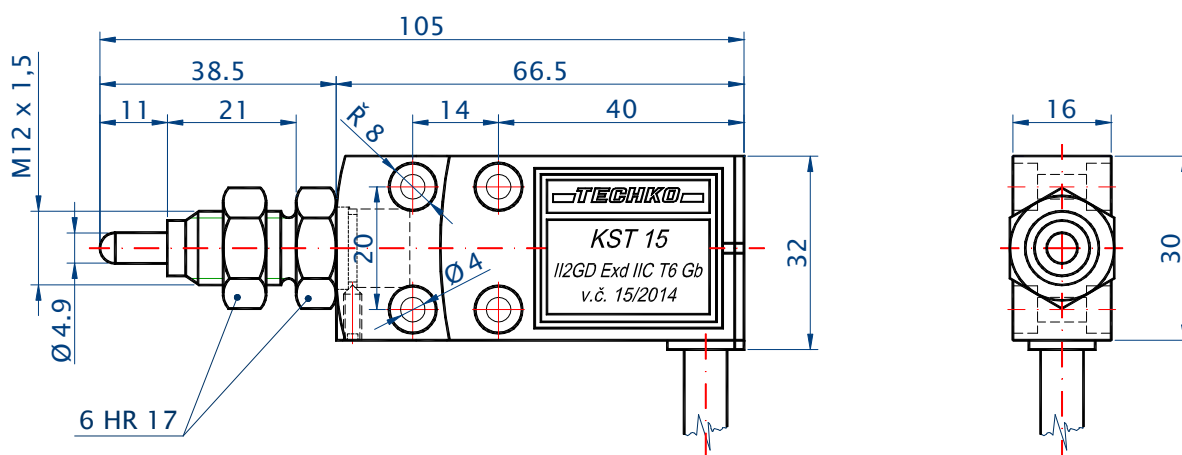
G 5 x 0,75 mm²

external diameter 7 mm

standard length 2, 5 and 10 m

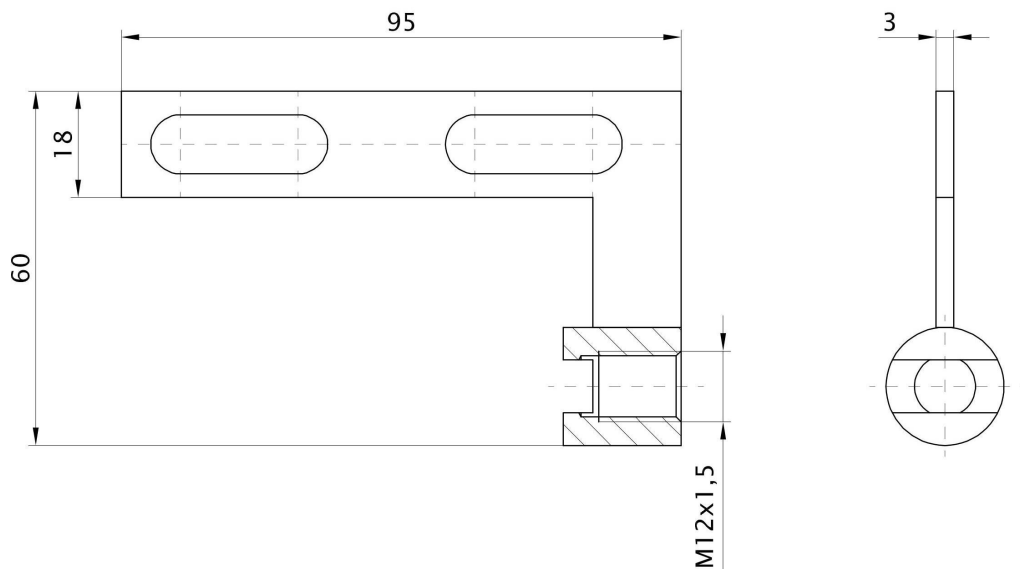
Working position:

arbitrary



5. ACCESSORIES

HOLDER KST (duplication of flameproof terminal switch type KST).



It is used for mounting a KST-type limit switch on the SČA C26 42 safety quick release..... if a position sensor is already installed in the stop of the quick release lever (e.g. for automatic gas preheating control) and a second sensor needs to be fitted on the safety quick release position (e.g. for a recording device). The KST holder is installed on the safety quick-release armature under the nuts of the two screws securing the lever stop on the superstructure of the quick-release mechanism - see illustration photo.

