

## COVERS type POK

09/2022

### 1. APPLICATION

The covers serve for closing underground shafts, specifically for underground gas pressure regulating stations, gas metering lines located under the ground surface, odorant injection shafts, etc.

The covers are used wherever necessary to ensure access to equipment and to ensure required load capacity in case a car crosses over at the same time.

### 2. DESCRIPTION

The cover, which forms the upper part of the concrete shaft, consists of a cover door and a frame. The frame and concrete shaft reinforcement are joined by welding. The steel cover door is firmly connected to the frame on one side using pins and opens upwards to the end position approx. 10° from the vertical. The cover doors have springs that make them lighter for easy opening. The end door is secured in the open position using a pull rod. Locking the rod into the frame causes the arrestment of all cover doors. One cover door has a lock, and elevating all is possible by opening this door with the lock.

The cover door has a gutter from inside for draining up rainwater that may penetrate through the joints between the cover doors. The gutters connect to the frame collecting gutter, and the rainwater is drained away through holes in the concrete shaft below ground level.

All accessible metal parts are interconnected. Two test terminals are on the frame for connection to the object's grounding system.



### 3. TECHNICAL PARAMETERS

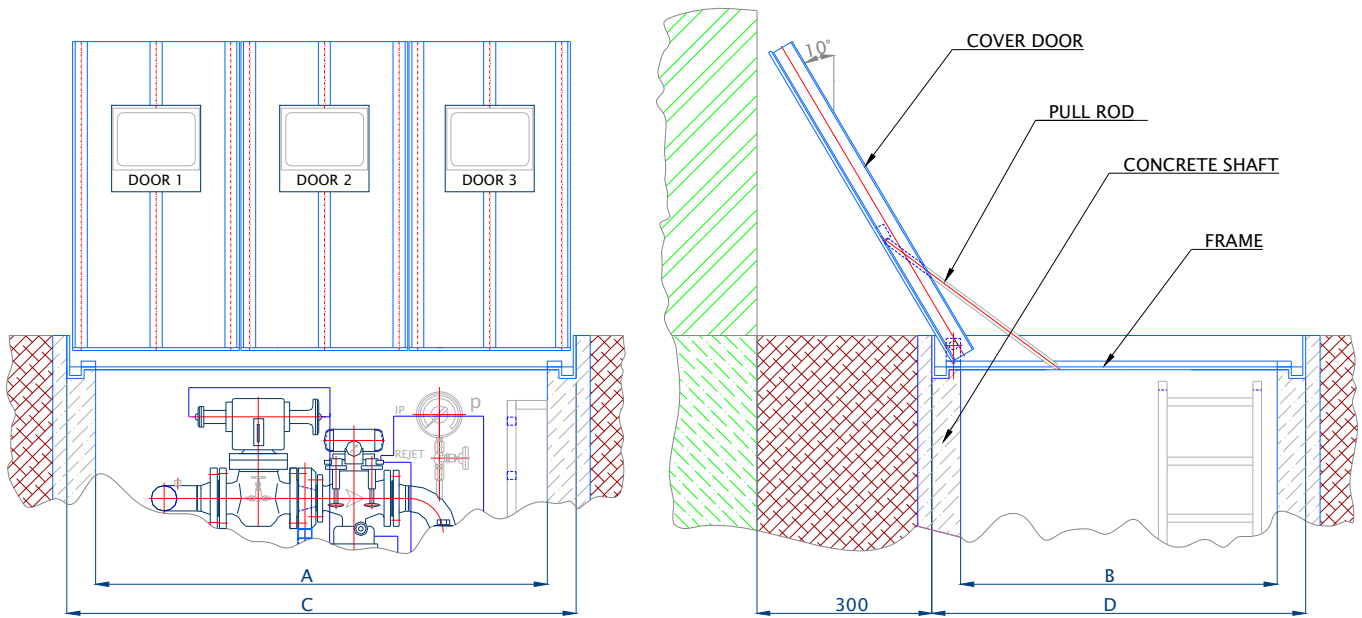
Calculation loadings of cover: 1,75 t acting on the surface 0,2x0,2 m in any place of cover

Safety coefficient: 1,6

Surface protection of frame and covers - hot galvanizing.

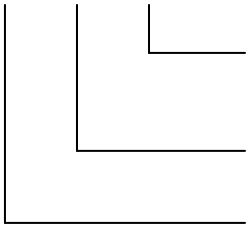
#### Basic technical parameters – COVERS POK

NUMBER OF DOORS	INTERNAL SHAFT DIMENSION A x B	EXTERNAL FRAME DIMENSION C x D
2	960 x 1 100	1 200 x 1 340
3	1560 x 1 100	1 800 x 1 340
4	2 160 x 1 100	2 400 x 1 340
5	2 760 x 1 100	3 000 x 1 340
6	3 360 x 1 100	3 600 x 1 340
7	3 960 x 1 100	4 200 x 1 340
8	4 560 x 1 100	4 800 x 1 340



**The type number is determined as follows:**

**POK 3 - S**



**Special implementation**

it is given only in case of different implementation than standard

**Number of doors:**

**3 - 3 doors**

**Basic type designation**

